

General Notes :

Lid Wt = 2,290 Lbs.
 Tank Wt = 6,230 Lbs.
 Total Wt = 8,520 Lbs.

Concrete Plug = 162 Lbs.
 (In Lid)(1.08 Cu/Ft)

Concrete Mix:
 Grey Concrete
 GRT Fibrillated Fiber
 1.5 lbs. per Cu/Yd

CUBIC FEET

Rebar
 "A" Anchor

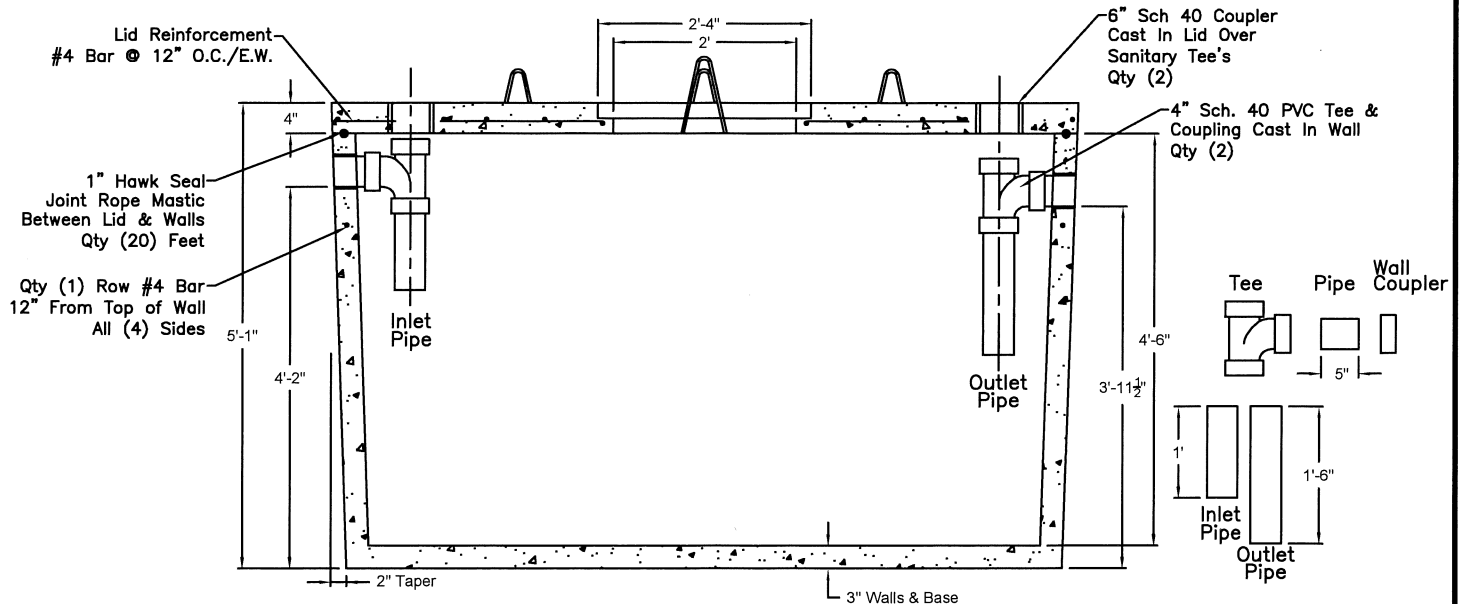
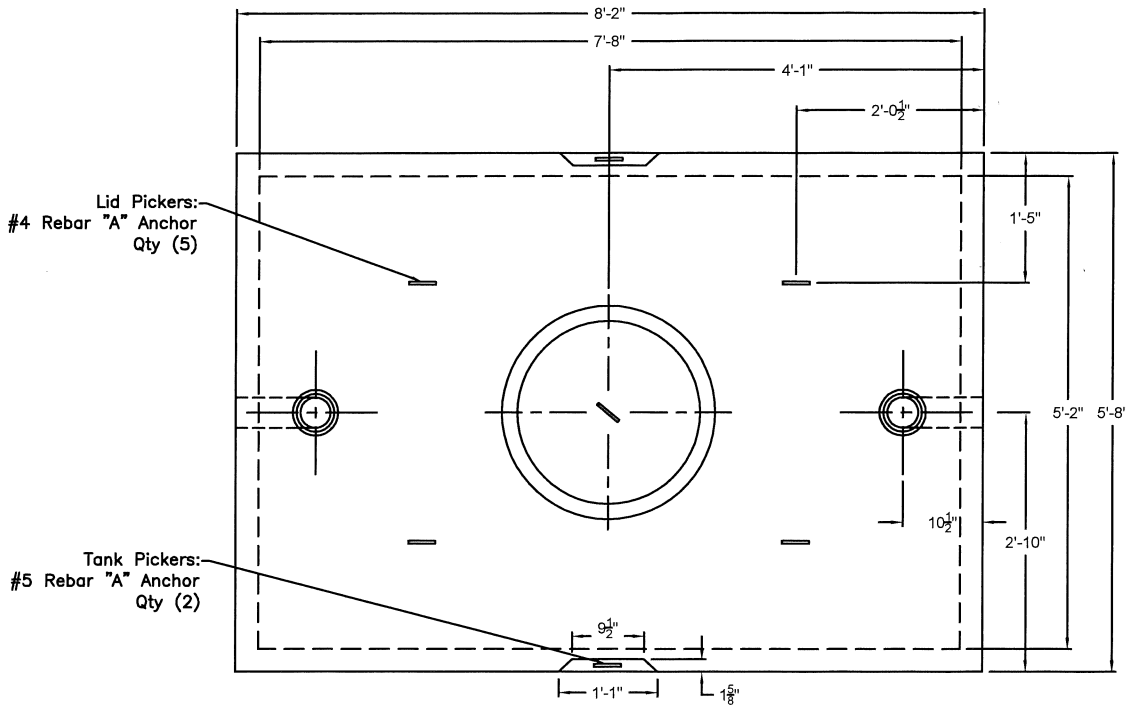
Lid 15.27
 Tank 41.53

Lid 5
 Tank 2

STR. #

DATE :
 06-08-2017

PG. NO.



Standard 1000 Gallon Septic Tank

JOB:

CONT.

MID AMERICA PRECAST INC.